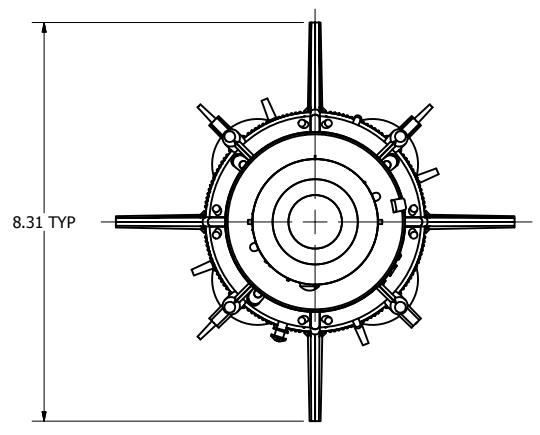
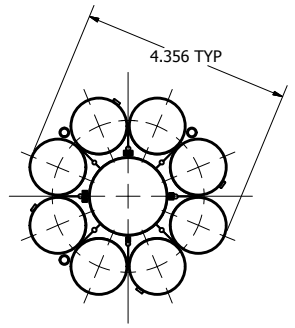


MODEL ASSEMBLY  
SCALE 1 / 2

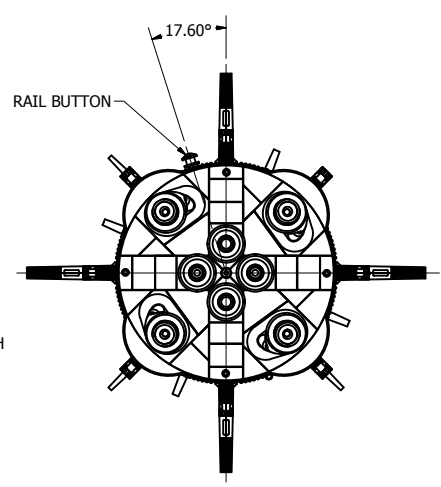
ALL DIMENSIONS IN INCHES



TOP VIEW



SECTION A-A



BOTTOM VIEW

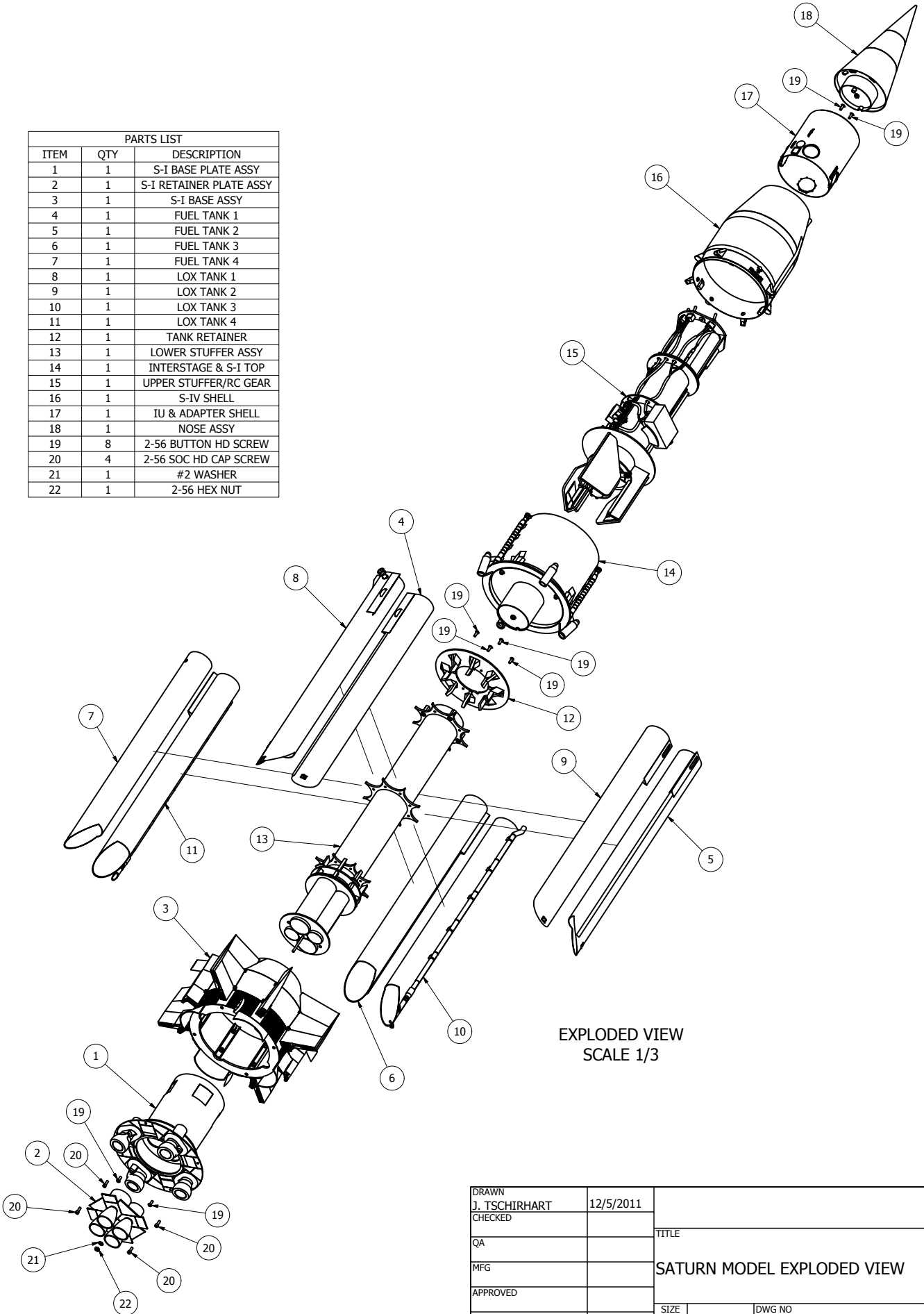
MODEL SHOWN WITH  
MOTORS INSTALLED

DRAWN J. TSCHIRHART		12/7/2011		TITLE	
CHECKED					
QA				SATURN MODEL ASSEMBLY	
MFG					
APPROVED					
SIZE	C	DWG NO	~SaturnAssemblyViews		REV
SCALE					SHEET 1 OF 1

PRODUCED BY AN AUTODESK EDUCATIONAL PRODUCT

PRODUCED BY AN AUTODESK EDUCATIONAL PRODUCT

PARTS LIST		
ITEM	QTY	DESCRIPTION
1	1	S-I BASE PLATE ASSY
2	1	S-I RETAINER PLATE ASSY
3	1	S-I BASE ASSY
4	1	FUEL TANK 1
5	1	FUEL TANK 2
6	1	FUEL TANK 3
7	1	FUEL TANK 4
8	1	LOX TANK 1
9	1	LOX TANK 2
10	1	LOX TANK 3
11	1	LOX TANK 4
12	1	TANK RETAINER
13	1	LOWER STUFFER ASSY
14	1	INTERSTAGE & S-I TOP
15	1	UPPER STUFFER/RC GEAR
16	1	S-IV SHELL
17	1	IU & ADAPTER SHELL
18	1	NOSE ASSY
19	8	2-56 BUTTON HD SCREW
20	4	2-56 SOC HD CAP SCREW
21	1	#2 WASHER
22	1	2-56 HEX NUT

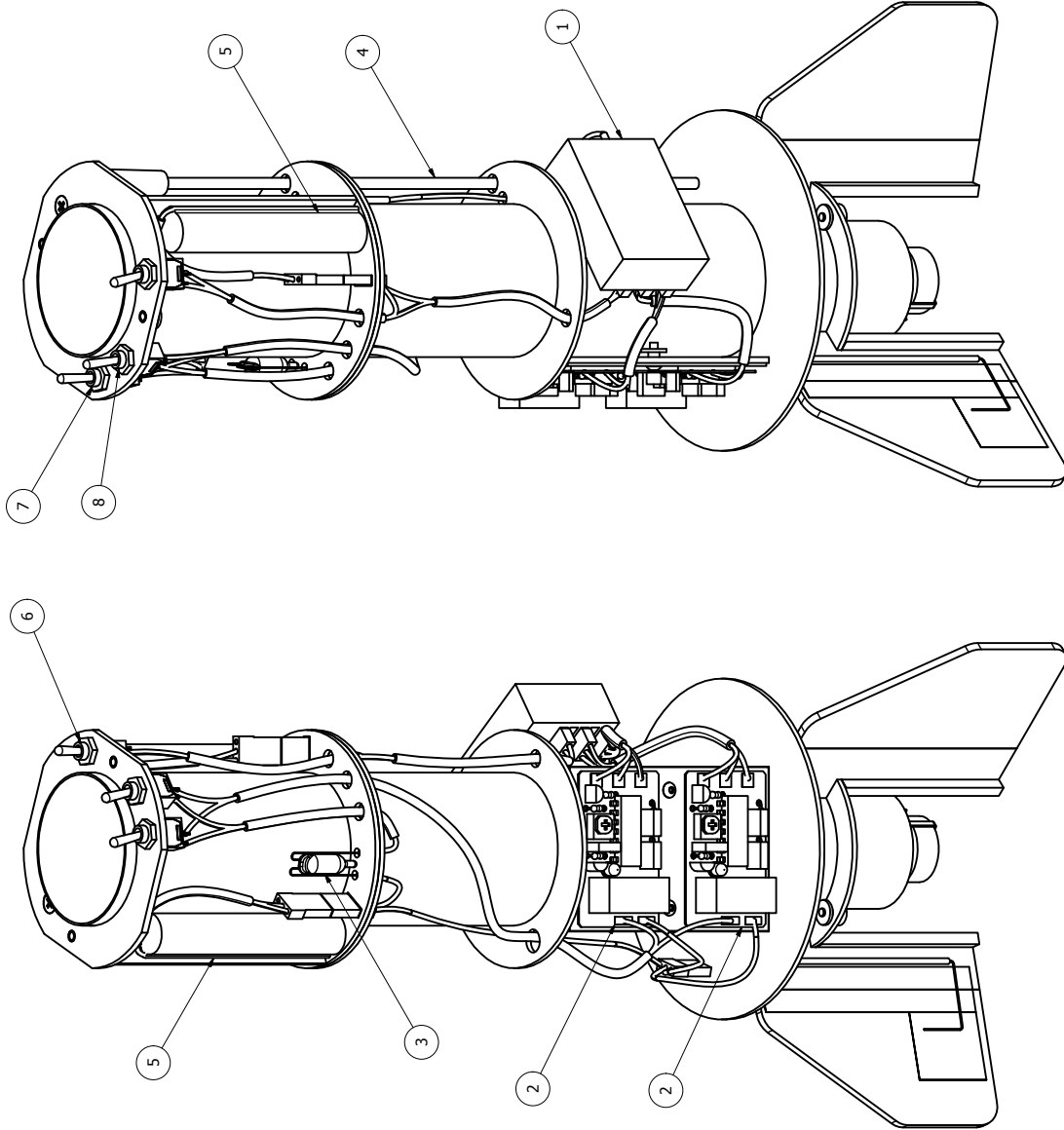


EXPLODED VIEW  
SCALE 1/3

DRAWN J. TSCHIRHART		12/5/2011		TITLE	
CHECKED				SATURN MODEL EXPLODED VIEW	
QA				SIZE C	
MFG				DWG NO ~SaturnExplodedView	
APPROVED				REV	
		SCALE		SHEET 1 OF 1	

PRODUCED BY AN AUTODESK EDUCATIONAL PRODUCT

PRODUCED BY AN AUTODESK EDUCATIONAL PRODUCT



ITEM	QTY	DESCRIPTION
1	1	Hitec Micro 555 Receiver (72 mhz)
2	2	Airborne Switch (Relay)
3	1	Mercury Switch
4	1	Base Loaded Receiver Antenna
5	2	50 mAh NiCad Battery Pack
6	1	Receiver Power (SPST Micromini Toggle Switch)
7	1	Staging Arming (SPST Micromini Toggle Switch)
8	1	Ejection Arming (SPST Micromini Toggle Switch)

DRAWN  
J. TSCHIRHART  
CHECKED

12/6/2011

TITLE

RC GEAR LAYOUT

SIZE

C

DWG NO

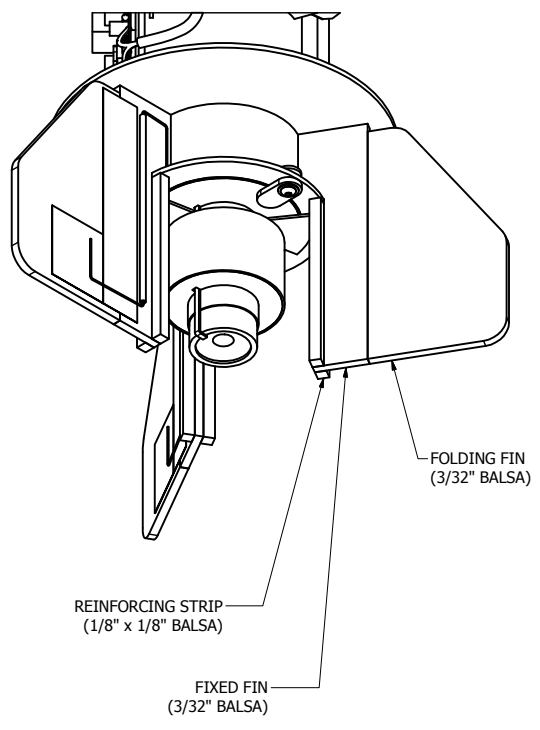
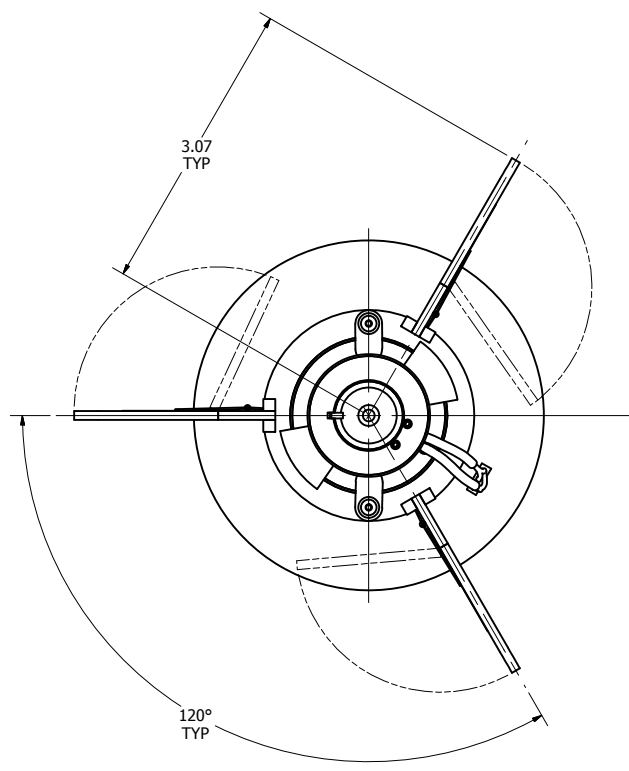
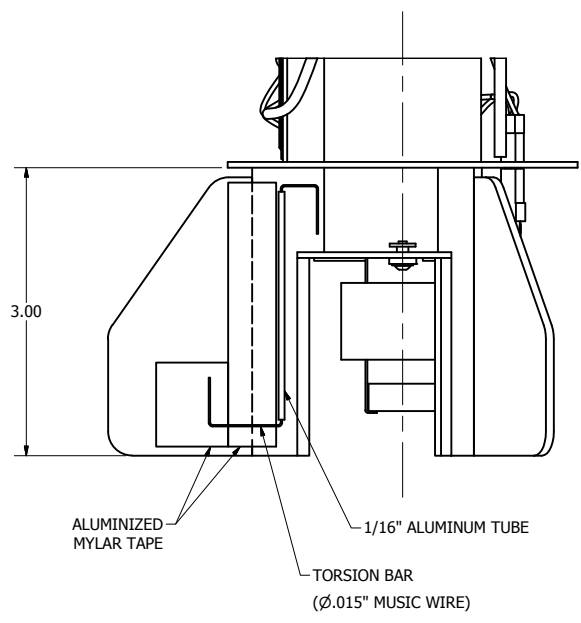
~RC\_Gear\_Layout

REV

SCALE

1

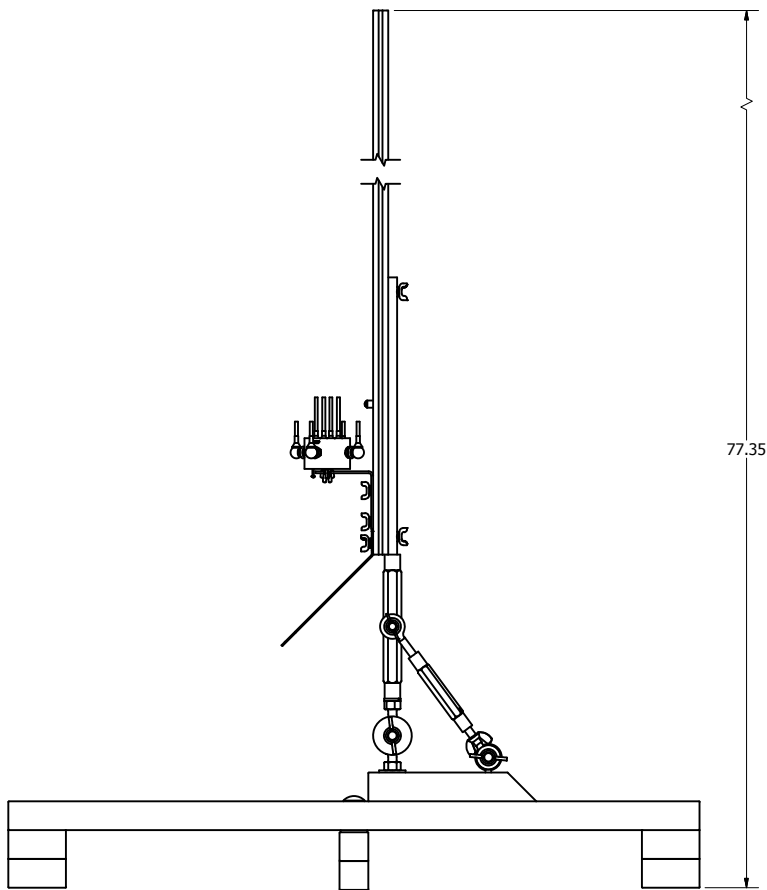
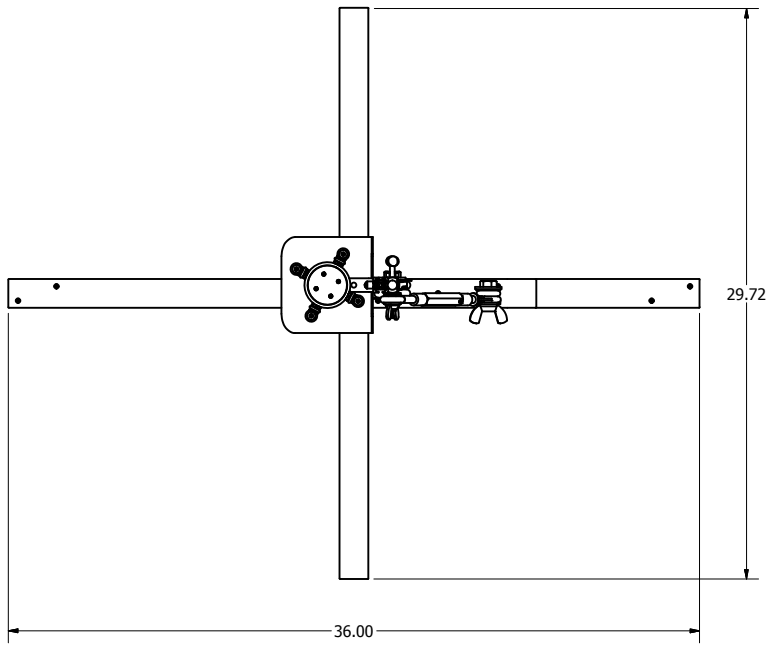
SHEET 1 OF 1



VARIOUS VIEWS SHOWN AT FULL SCALE

ALL DIMENSIONS IN INCHES

DRAWN J. TSCHIRHART	12/7/2011		
CHECKED		TITLE	
QA		POP-OUT FIN DESIGN BASICS	
MFG		SIZE C	DWG NO ~PopoutFinDesign
APPROVED		SCALE	REV
		SHEET 1 OF 1	



LAUNCH PAD ASSEMBLY  
(SHOWN W/ PVC SPIDER)  
SCALE 1:5

ALL DIMENSIONS IN INCHES

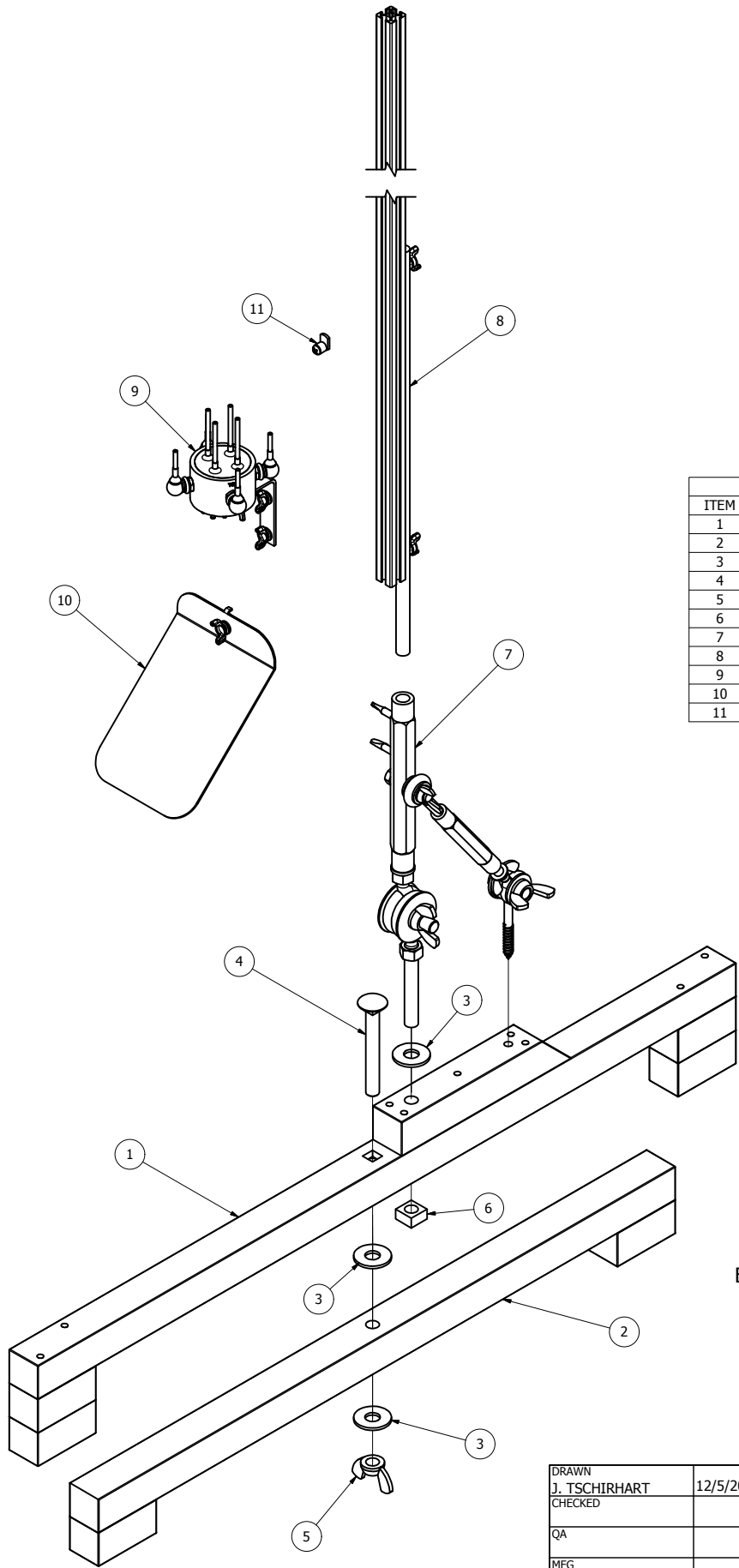
DRAWN	J. TSCHIRHART	12/4/2011	TITLE	
CHECKED			SATURN LAUNCH PAD	
QA			SIZE	DWG NO
MFG			C	~LaunchPadMainAssy
APPROVED			SCALE	REV
				SHEET 1 OF 1

PRODUCED BY AN AUTODESK EDUCATIONAL PRODUCT

PRODUCED BY AN AUTODESK EDUCATIONAL PRODUCT

PRODUCED BY AN AUTODESK EDUCATIONAL PRODUCT

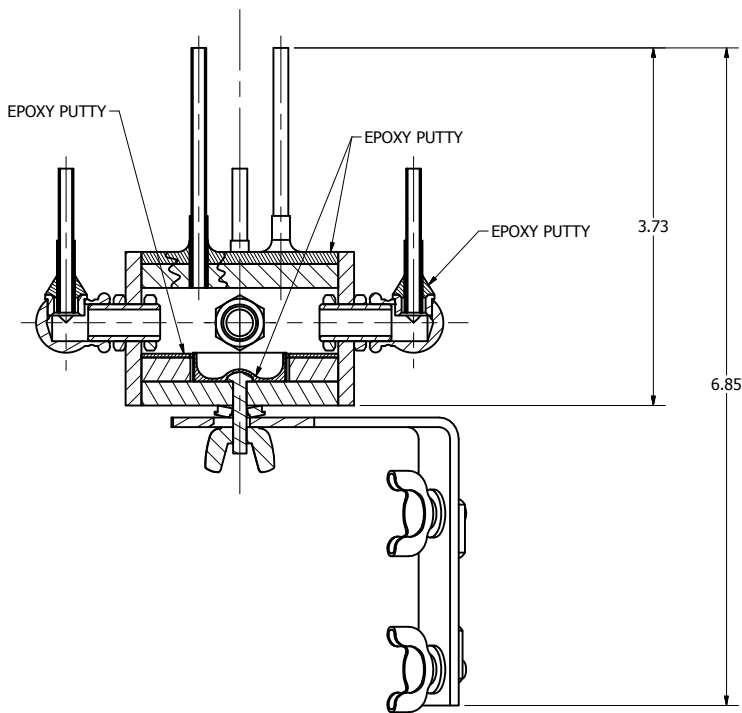
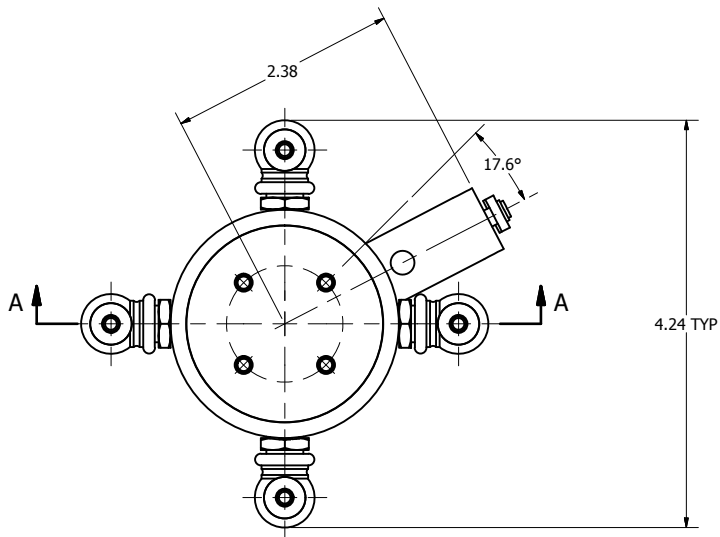
PRODUCED BY AN AUTODESK EDUCATIONAL PRODUCT



PARTS LIST		
ITEM	QTY	DESCRIPTION
1	1	TOP LEG ASSEMBLY
2	1	LOWER LEG ASSEMBLY
3	3	.562 x 1.375 x .109 TYPE A PLAIN WASHER
4	1	1/2-13 Carriage Screw 4 LONG
5	3	1/2-13 WING NUT
6	1	1/2-13 SQUARE NUT
7	1	ROD/RAIL MOUNT & TILTER ASSEMBLY
8	1	RAIL ASSEMBLY
9	1	PVC SPIDER ASSEMBLY W/ MOUNT
10	1	BLAST DEFLECTOR W/ MOUNT
11	1	MODEL STANDOFF ASSEMBLY

EXPLODED VIEW  
SCALE 1:3

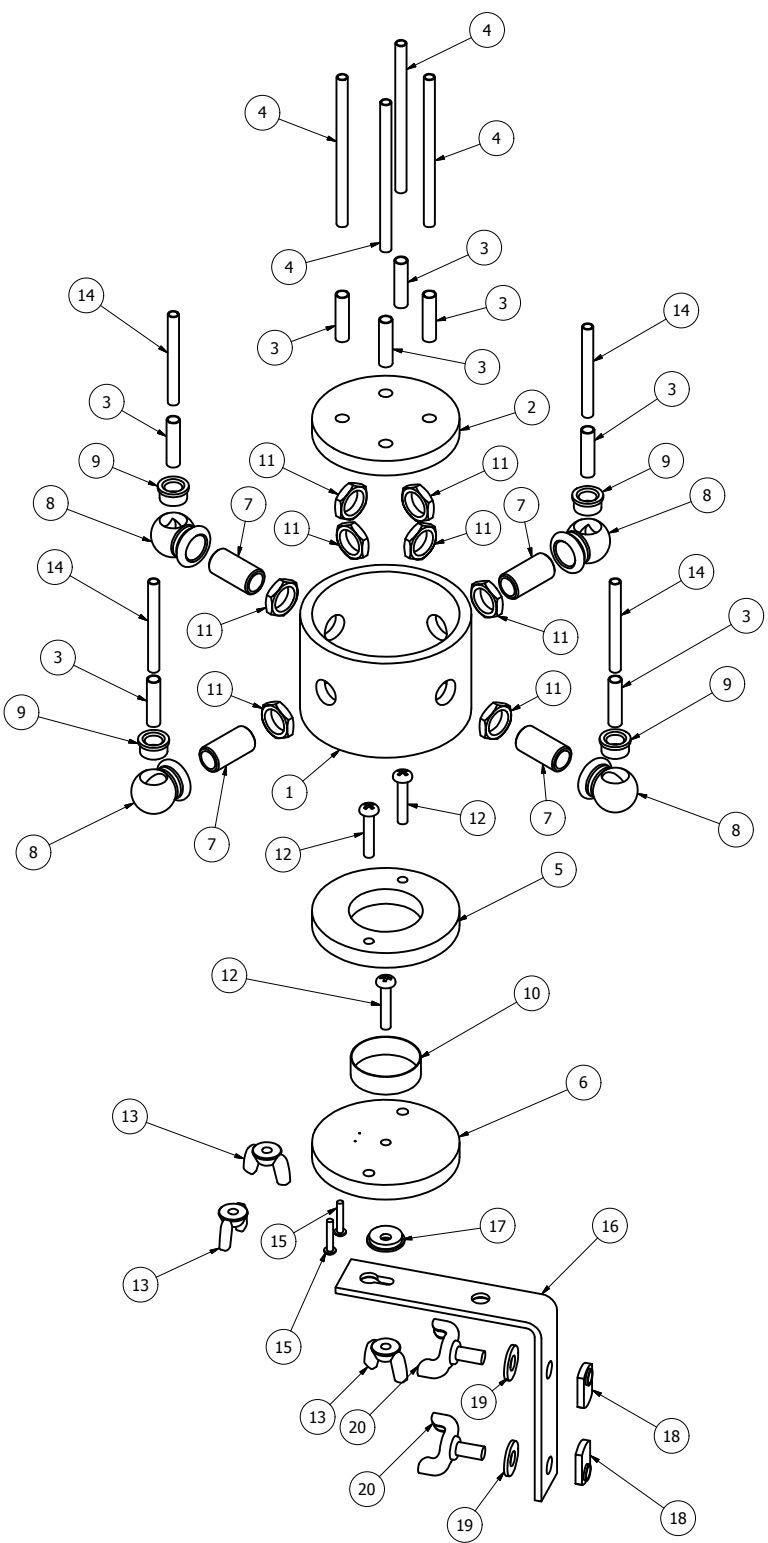
DRAWN J. TSCHIRHART	12/5/2011	TITLE	
CHECKED		LAUNCH PAD, EXPLODED VIEW	
QA		SIZE C	DWG NO ~LaunchPadExplode
MFG		SCALE	REV
APPROVED		SHEET 1 OF 1	



SECTION A-A  
SCALE 1:1

ALL DIMENSIONS IN INCHES

DRAWN J. TSCHIRHART		12/6/2011		TITLE	
CHECKED					
QA				PVC SPIDER, ASSEMBLY	
MFG					
APPROVED				SIZE C	
				DWG NO ~PVCSpiderAssemblyView	
				REV	
				SCALE	
				SHEET 1 OF 2	



EXPLODED VIEW  
SCALE .75:1

PARTS LIST		
ITEM	QTY	DESCRIPTION
1	1	2" SCH 40 PVC PIPE, 1.55" LONG
2	1	TOP PLATE
3	8	EXHAUST TUBE BASE (3/16 BRASS TUBE)
4	4	INBOARD TUBE EXTENSION (5/32 BRASS TUBE)
5	1	ANCHOR PLATE
6	1	BOTTOM PLATE
7	4	LAMP NIPPLE .75" LONG
8	4	LAMP ARMBACK 90 DEGREE
9	4	1/8M x 1/4-27F BRASS REDUCER
10	1	Powder Cup
11	8	1/8-27 IPS Brass Hex Nut
12	3	6-32 x .75 RND HD PHILLIPS SCREW
13	3	6-32 WING NUT
14	4	OUTBOARD TUBE EXTENSION (5/32 BRASS TUBE)
15	2	2-56 x .50 RND HD PHILLIPS SCREW
16	1	3" L-BRACKET (STANLEY)
17	1	#6 BONDED WASHER
18	2	10-32 WELD NUT
19	2	.219 x .500 x .049 TYPE A PLAIN WASHER
20	2	10-32 x .375 THUMB SCREW (WING)

DRAWN J. TSCHIRHART		12/6/2011		TITLE PVC SPIDER, EXPLODED VIEW	
CHECKED					
QA				SIZE C	
MFG					
APPROVED				DWG NO ~PVCSpiderExplodedView	
		SCALE		REV	
				SHEET 1 OF 1	

PRODUCED BY AN AUTODESK EDUCATIONAL PRODUCT

PRODUCED BY AN AUTODESK EDUCATIONAL PRODUCT